

Bystrzyca Kłodzka District

Investment Offer

# Gmina Bystrzyca Kłodzka Oferta Inwestycyjna



Alcaniz



Usti



Kaźmierz



Amberg



Laissey



Massa Martana

[www.bystrzycaklodzka.pl](http://www.bystrzycaklodzka.pl)

## Geographical location and information about the district

### Bystrzyca Kłodzka District – Investment Offer

- Lower Silesian Province
- Kłodzko County
- Strategic location: national road No. 33 joins Wrocław, Prague and Vienna. It is a main transport and development axis of the Lower Silesian Province as well as an important point on the transport trail leading to the Czech Republic and further to the Balkans.
- District area: 338 km<sup>2</sup>
  - the largest in the Kłodzko County
  - one of the largest districts in the Lower Silesian Province (covers about 1,7% of the area)
  - the town covers 3,25% of the district area
- 31 soletstvos, 41 villages
- Population: approx. 20.000

The character of the district is both urban and rural. Bystrzyca Kłodzka District borders districts of Polanica Zdrój, Stronie Śląskie, Lądek Zdrój, Międzylesie and Szczytno.

The western area of the district is a part of the Czech Republic border.

**Położenie geograficzne i informacje o gminie**  
Gmina Bystrzyca Kłodzka - Oferta Inwestycyjna

- Województwo Dolnośląskie
- Powiat Kłodzki
- Strategiczne połączenie drogi krajowej nr 33 łączącej Wrocław - Pragę - Wiedeń. Jest główną ośią transportową i rozwojową Dolnego Śląska oraz ważnym punktem na szlaku transportowym wiodącym do Republiki Czeskiej, Austrii i dalej na Balkany.
- Obszar gminy: 338 km<sup>2</sup>
  - największy w powiecie kłodzkim
  - jedna z większych gmin w województwie dolnośląskim (ok. 1,7% powierzchni)
  - miasto stanowi 3,25% powierzchni gminy
- 31 sołectw, 41 wsi
- Liczba ludności: około 20.000

Gmina posiada charakter miejsko-wiejski. Graniczy z gminami: Polanica Zdrój, Stronie Śląskie, Lądek Zdrój, Międzylesie i Szczytno. Zachodni obszar gminy jest częścią granicy państwa z Republiką Czeską.

Źródło: Google Maps  
www.bystrzycaklodzka.pl

Information about the district

Bystrzyca Kłodzka – Investment Offer

Bystrzyca Kłodzka District is an attractive area from a tourist's point of view. It has a varied lie of the land and excellent tourist and landscape routes.

On site of the district there are: Wilczki Waterfall Reserve, Śnieżnicki Landscape Park, Długopole Zdrój spa, Międzygórze health resort, the area of protected landscape of the Bystrzckie and Orlickie mountains as well as mineral water springs.

**Informacje o gminie**

**Gmina Bystrzyca Kłodzka - Oferta Inwestycyjna**

Gmina Bystrzyca Kłodzka jest to teren atrakcyjny turystycznie o urozmaiconej rzeźbie terenu, ze znakomitymi szlakami turystycznymi i krajobrazowymi.

Na terenie gminy znajdują się: rezerwat Wodospadu Wilczki, Śnieżnicki Park Krajobrazowy, Uzdrowisko Długopole Zdrój, stacja klimatyczna Międzygórze, Obszar Chronionego Krajobrazu Gór Bystrzyckich i Orlickich oraz źródła wód mineralnych.

[www.bystrzyckaklodzka.pl](http://www.bystrzyckaklodzka.pl)

Bystrzyca Kłodzka – the town

Bystrzyca Kłodzka District – Investment Offer

Bystrzyca Kłodzka is a town which retained the historical medieval urban layout with numerous precious monuments.



The poster features a green background with a white curved line. At the top left is a logo with a sun and the text 'Bystrzyca Kłodzka'. To the right is a red shield with a white rampant lion. Below the logo is the title 'Bystrzyca Kłodzka - miasto' in a bold, sans-serif font, followed by 'Gmina Bystrzyca Kłodzka - Oferta Inwestycyjna' in a smaller font. A central text box contains the Polish text: 'Bystrzyca Kłodzka jest miastem, które zachowało historyczny, średniowieczny układ urbanistyczny, z wieloma cennymi zabytkami.' Below this text are two aerial photographs of the town. The left photo shows a dense cluster of buildings with red-tiled roofs. The right photo shows a wider view of the town and surrounding fields. A small credit 'foto: M. Kozber' is visible in the bottom right corner of the right photo. At the bottom center of the poster is the website address 'www.bystrzycaklodzka.pl'.

**Bystrzyca Kłodzka - miasto**  
Gmina Bystrzyca Kłodzka - Oferta Inwestycyjna

Bystrzyca Kłodzka jest miastem, które zachowało historyczny, średniowieczny układ urbanistyczny, z wieloma cennymi zabytkami.

foto: M. Kozber

[www.bystrzycaklodzka.pl](http://www.bystrzycaklodzka.pl)

Bystrzyca Kłodzka – monuments

Bystrzyca Kłodzka District – Investment Offer

The most important monuments of the town are:

The Town Hall



Phillumeny Museum



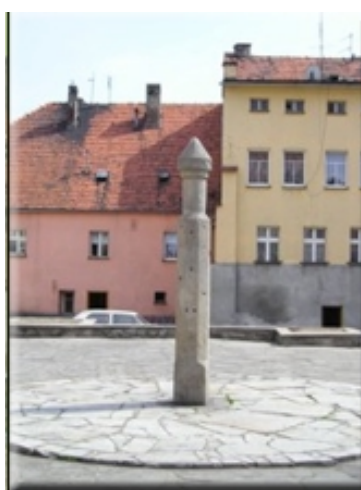
Knight's Watchtower



The Holy Trinity Statue



Pillory



Kłodzko Watchtower



Bystrzyca Kłodzka – monuments

Bystrzyca Kłodzka District – Investment Offer

The most important monuments:

Water Gate



St. Michael the Archangel Church



St. Florian Church



Alderman's office  
Nepomucen



Fortifications



Statue of St. Jan



Bystrzyca Kłodzka – tourist attractions

Bystrzyca Kłodzka District – Investment Offer



Bystrzyca Kłodzka – leisure time

Bystrzyca Kłodzka District – Investment Offer



Bystrzyca Kłodzka –important distances

Bystrzyca Kłodzka District – Investment Offer

Distances:



Source: Wikipedia.org

Copyrights: copyleft

## Bystrzyca Kłodzka –location in Europe

### Bystrzyca Kłodzka District – Investment Offer



- Bystrzyca Kłodzka –  
Prague: 191 km
- Bystrzyca Kłodzka –  
Vienna: 380 km
- Bystrzyca Kłodzka –  
Berlin: 433 km
- Bystrzyca Kłodzka –  
Paris: 1241 km
- Bystrzyca Kłodzka –  
Milan: 1062 km
- Bystrzyca Kłodzka –  
Amsterdam: 1053 km
- Bystrzyca Kłodzka –  
Brussels: 1161 km
- Bystrzyca Kłodzka –  
Vilnius: 1020 km
- Bystrzyca Kłodzka –  
Moscow: 1760 km
- Bystrzyca Kłodzka –  
Kiev: 1400 km

Bystrzyca Kłodzka –border crossings

Bystrzyca Kłodzka District – Investment Offer

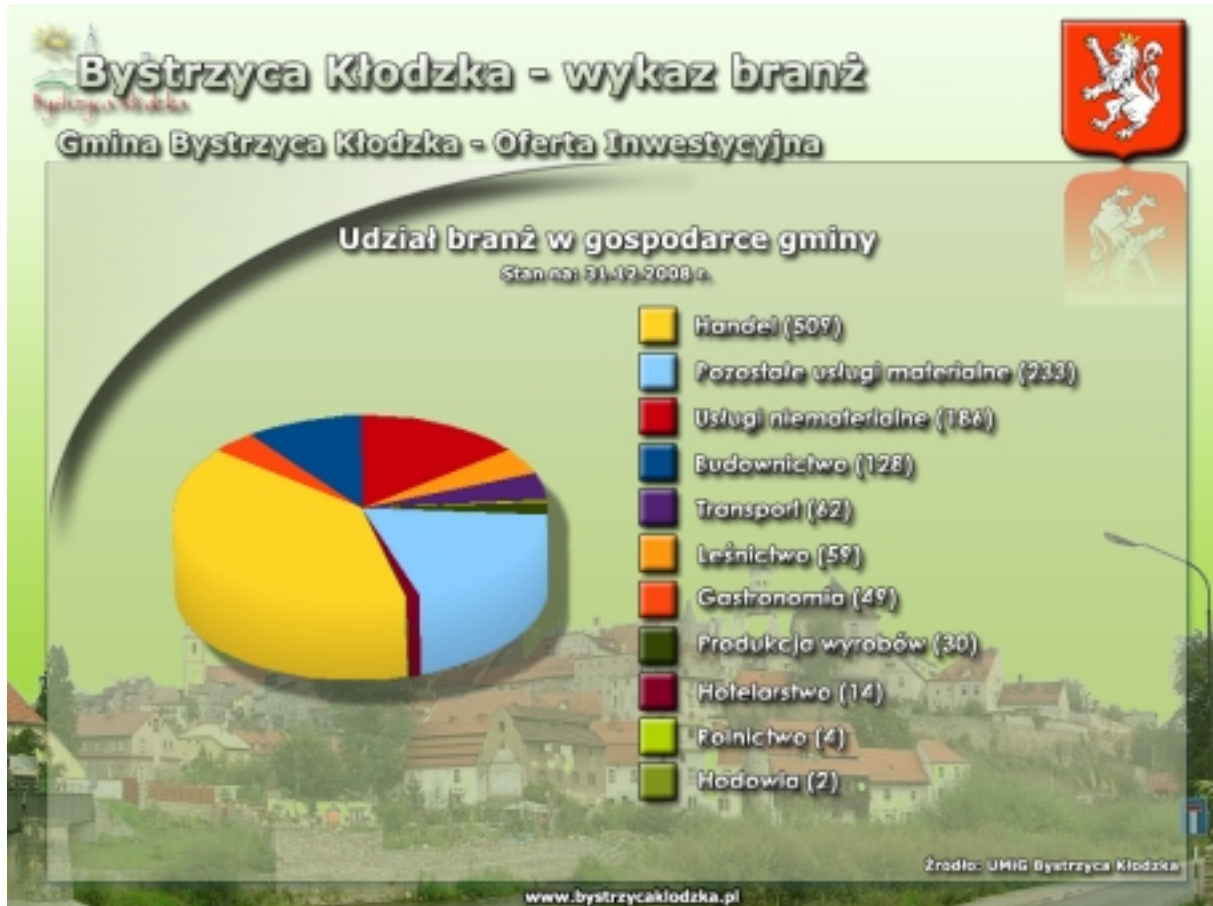


Distances to border crossings:

- Boboszów – Dolni Lipka: 22 km
- Kudowa Słone – Nachod: 44 km
- Zgorzelec – Görlitz: 253 km

Bystrzyca Kłodzka – a list of industries

Bystrzyca Kłodzka District – Investment Offer



Industries' share in the district's economy

as of 31.12.2009

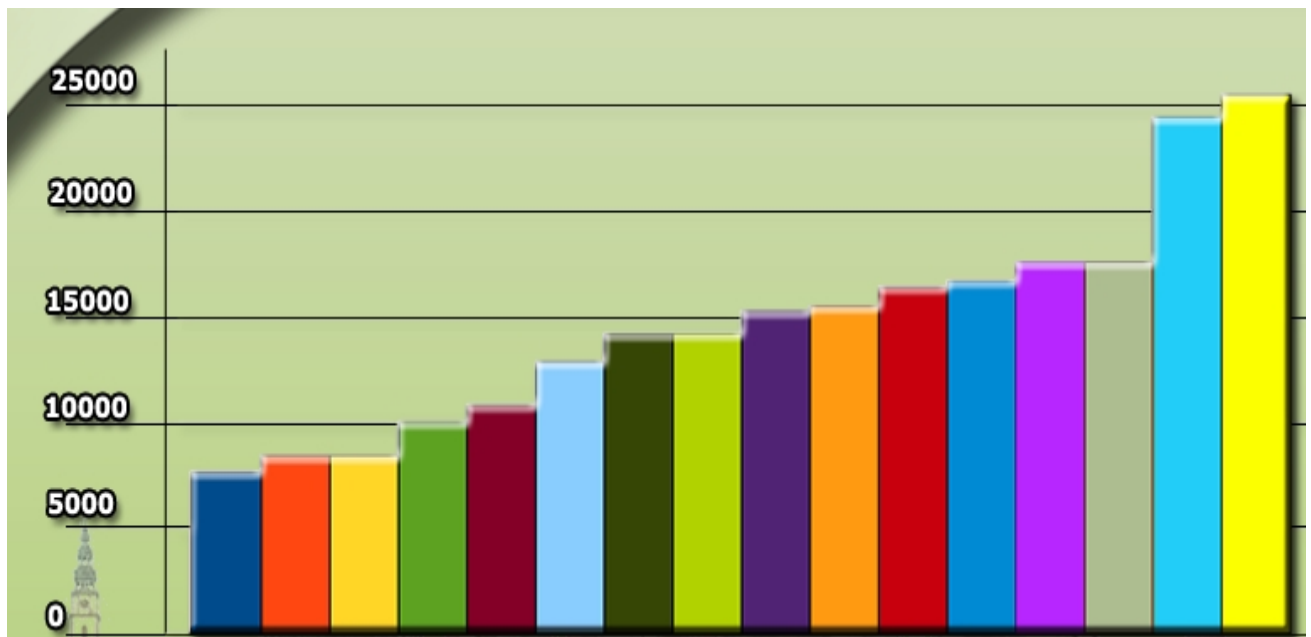
- Trade (509)
- Other material services (233)
- Non-material services (186)
- Construction (128)
- Transport (62)
- Forestry (59)
- Catering (49)
- Manufacturing of goods (30)
- Hotel industry (14)
- Farming (4)
- Animal husbandry (2)

Source: UMIG Bystrzyca Kłodzka

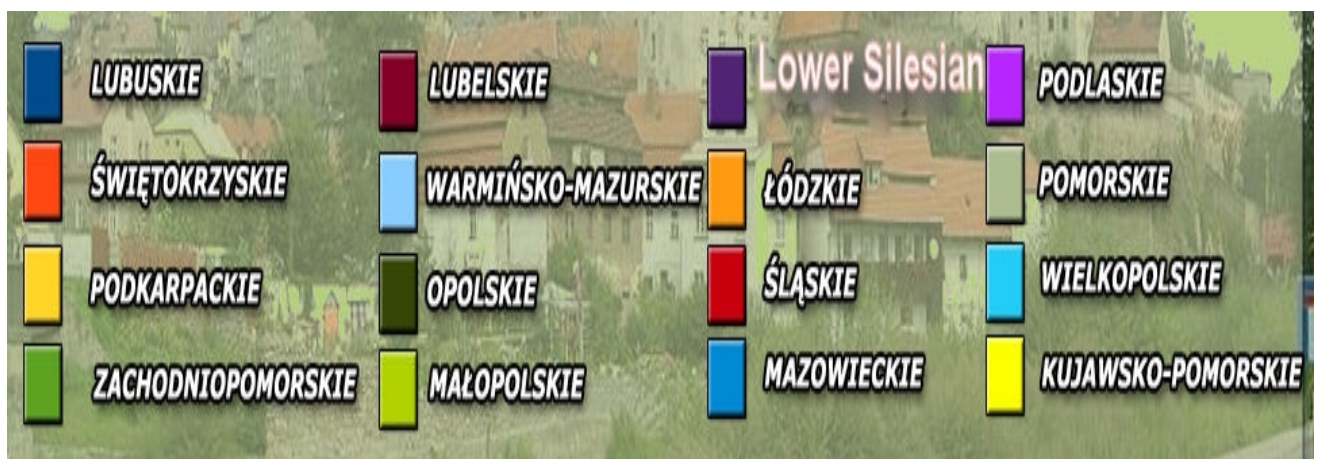
Bystrzyca Kłodzka – land prices

Bystrzyca Kłodzka District – Investment Offer

Average land prices in PLN for individual provinces in the 4<sup>th</sup> quarter of 2008:



Source: GUS



## Unemployment in the Kłodzko County

### Bystrzyca Kłodzka District – Investment Offer

The number of the unemployed with the distribution across the districts

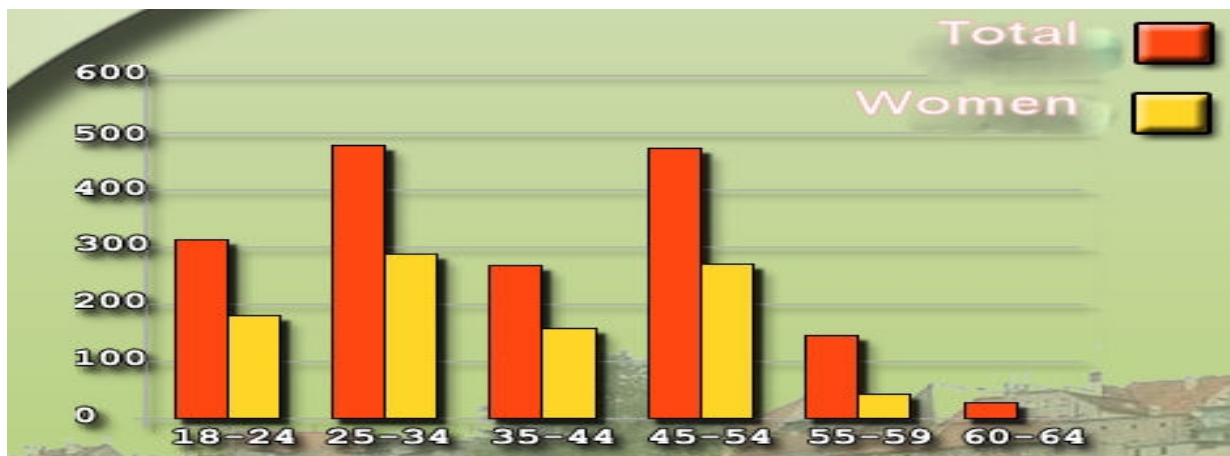


### Bystrzyca Kłodzka – labor market

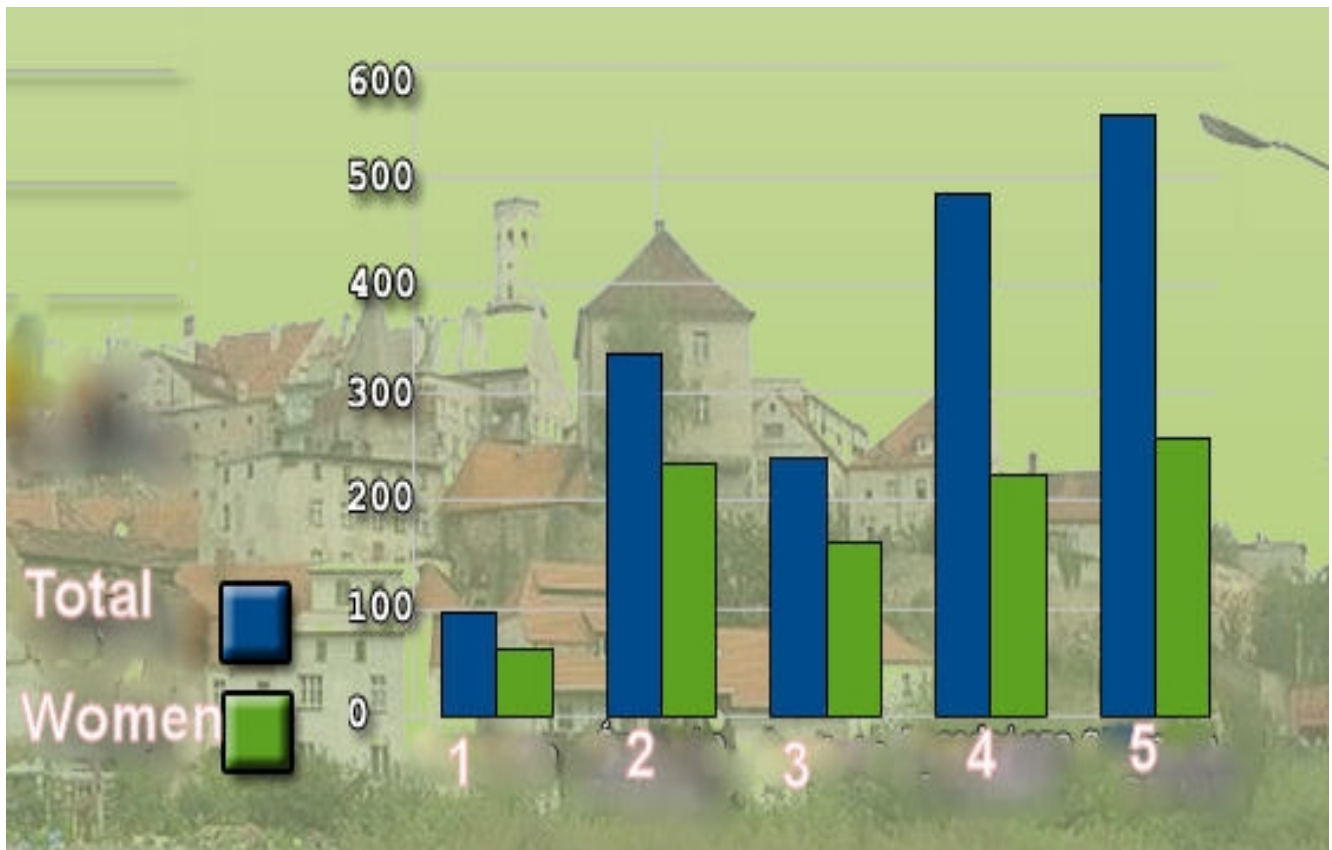
#### Bystrzyca Kłodzka District – Investment Offer

Unemployment in the district according to age:

as of 31.12.2008



Unemployment in the district according to the level of education:  
as of 31.12.2008

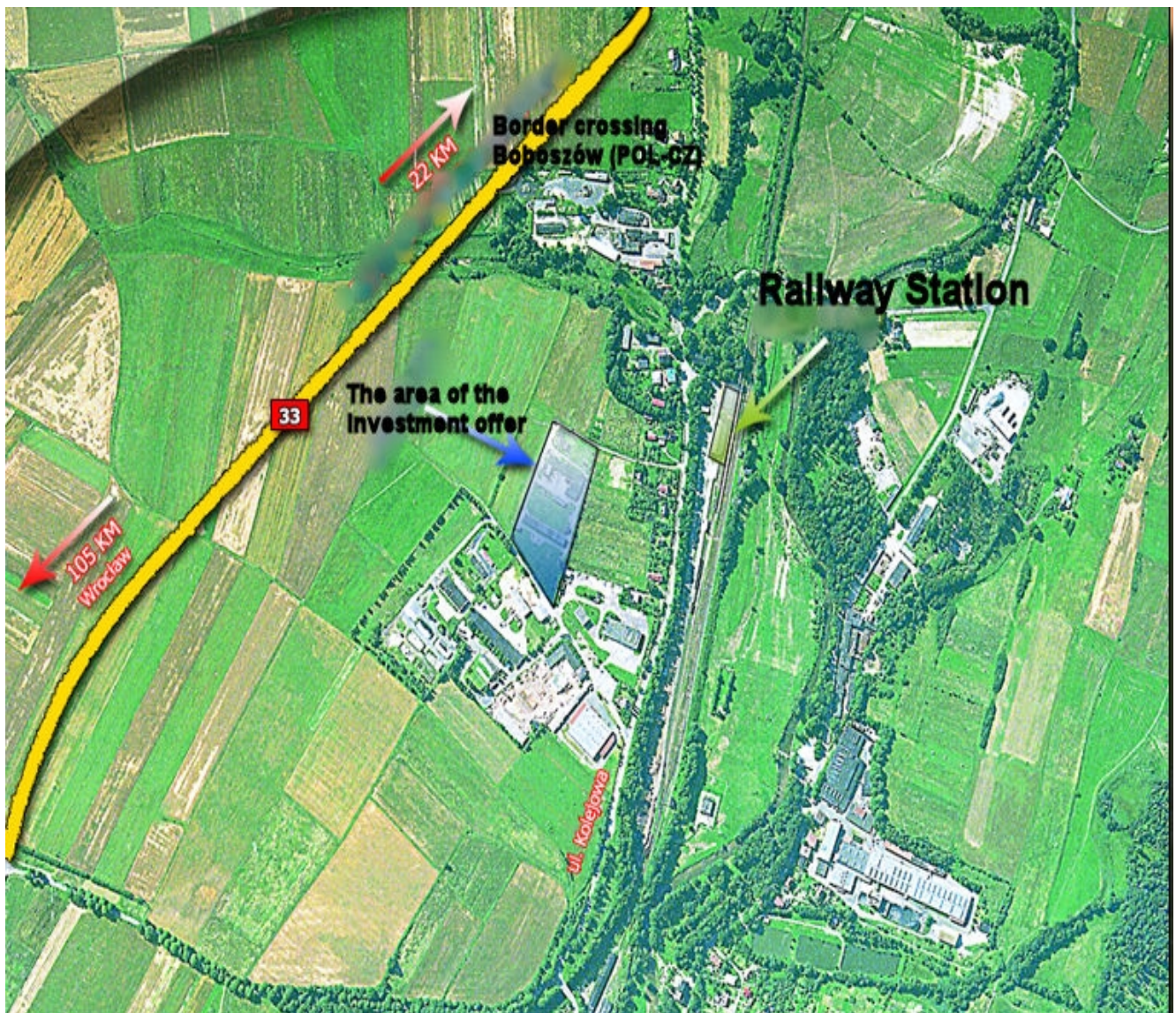


1. Higher education
2. Vocational high school
3. Secondary education
4. Vocational education
5. Secondary school and lower

Source: The County's Labor Office in Kłodzko

Bystrzyca Kłodzka – a map of the area

Bystrzyca Kłodzka District – Investment Offer



Bystrzyca Kłodzka – the zone area

Bystrzyca Kłodzka District – Investment Offer



Bystrzyca Kłodzka – information about the zone

Bystrzyca Kłodzka District – Investment Offer

Data of WSSE „INVEST PARK” sub zone in Bystrzyca Kłodzka

Accurate data of the tenderer	Name of the owner	Bystrzyca Kłodzka District
	Address	Ul. Sienkiewicza 6 57-500 Bystrzyca Kłodzka
	Telephone	+4874 811 76 00, 811 76 05
	Fax	+4874 811 15 88
	E-mail address	<a href="mailto:burmistrz@bystrzycaklodzka.pl">burmistrz@bystrzycaklodzka.pl</a>
Lot location	Name of the place	Obwód Niedźwiedna
	Town/District	Bystrzyca Kłodzka
	County	Kłodzko
	Province	Lower Silesian
	Maximum available surface	1,8470 ha
	Shape of the lot	Rectangular
	Grounds for sub suppliers	N/A

Bystrzyca Kłodzka – information about the zone

Bystrzyca Kłodzka District – Investment Offer

Data of WSSE „INVEST PARK” sub zone in Bystrzyca Kłodzka

Information about the property	Name of the owner	Bystrzyca Kłodzka District
	Type of ownership	The District property
	Ownership limitations	None
	Purpose	Manufacturing and service area
Characteristics of the land	Land classification	Sand silt, clay detritus, foundation of soft cracked rock (residual clay soil)
	Difference of the land level	0,5%
	Current use	Manufacturing and service area (construction and forestry industries)
	Water pollution	None
	Waste materials	None
	Underground water level	None till the depth of 3,5 m
	Risk of flooding and earth tremors	None
	Gas pipe	None
	Trees / forestation	N/A
	Ecological restrictions	Difficulties within the lot borders

Bystrzyca Kłodzka – information about the zone

Bystrzyca Kłodzka District – Investment Offer

Data of WSSE „INVEST PARK” sub zone in Bystrzyca Kłodzka

Buildings / Construction restrictions	Building coverage according to the zoning plan	60%
	Building height limit	4 stories
	Buffer zone	None
	Other plants located in the neighborhood	Building materials warehouses, a filling station
Transport connections	Access road to the lot	Kolejowa street and the county road No. 392
	Highway / national road	National road No. 33
	Railway track	Bystrzycka Kłodzka Town Station – the distance of 1,5 km
	Railway siding	Bystrzyca Kłodzka Suburb Station – the distance of 1,5 km
	Nearest international airport	Wrocław Strachowice 110 km
	Nearest sea port (trade)	Szczecin approx. 500 km
	Nearest province city	Wrocław 110 km

Bystrzyca Kłodzka – information about the zone

Bystrzyca Kłodzka District – Investment Offer

Data of WSSE „INVEST PARK” sub zone in Bystrzyca Kłodzka

Price	Land price	To be agreed
Property tax	Land of industrial qualification	1,8470 ha
	Industrial buildings	Exist
Facilitations for investors	<p>Land well-prepared for investments</p> <p>Property tax exemptions in case business activities are started and people from the district are employed</p> <p>Tax deductions for strategic investors</p> <p>Assistance in fixing formal and legal issues related to business start-up on site of the sub zone</p>	

Bystrzyca Kłodzka – information about the zone

Bystrzyca Kłodzka District – Investment Offer

Data of WSSE „INVEST PARK” sub zone in Bystrzyca Kłodzka

Existing infrastructure	Electricity	
	Voltage (kV)	20kV – overhead line near the property
	Available capacity (MW)	
	Connection point (the distance from the border)	25 m
	Thermal energy	External thermal energy supply is not planned
	Gas	
	Type	Conductive gas
	Connection point (the distance from the border)	350 m
	Pipe diameter (mm)	200
	Capacity (Nm <sup>3</sup> /h)	390
	Telecommunications	
	Analogue lines	Possible to be connected
	Digital lines	Possible to be connected

Bystrzyca Kłodzka – information about the zone

Bystrzyca Kłodzka District – Investment Offer

Data of WSSE „INVEST PARK” sub zone in Bystrzyca Kłodzka

Existing infrastructure	Water (industrial and potable)	
	Connection point (the distance from the border)	100 m from Kolejowa street
	Pipe diameter (mm)	25 m
	Daily capacity (m <sup>3</sup> /h)	8
	Sewage discharge	
	Daily capacity (m <sup>3</sup> /h)	Estimated capacity approx. 4-50 m <sup>3</sup> /d
	Pipe diameter (mm)	Network of diameter of 200 is planned to be made in the section from the Zone to Kolejowa street
	Waste	The district owns a municipal dump of the surface of 3,68 ha
	Waste water treatment plant	The length of the interceptor sewer from the zone area to the waste water treatment plant is of approx. 2 km An alternative for the interceptor sewer is construction of a local waste water treatment plant

## State aid

### Bystrzyca Kłodzka District – Investment Offer

„INVEST-PARK” Wałbrzych Special Economic Zone has been established for 20 years, i.e. till 29 May 2017. During that period entrepreneurs investing on the WSS site can acquire state aid in the form of income tax deduction, by virtue of creating new workplaces related to completion of a new investment.

The legal status of the land of the Wałbrzych Special Economic Zone, being the property of WSSE or of the district – partners of the company, has been regulated (free from charges), and according to the zoning plan it is the land of industrial classification. The land has been controlled by the WSSE „INVEST-PARK” Sp. z o.o., which executes the procedure until a permit for running business activities on site of the zone and for land sales is granted. All actions related to purchasing building lots and acquiring a permit for running business activities on site of the zone which grants the right to obtain state aid, are performed in one place.

## State aid

### Bystrzyca Kłodzka District – Investment Offer

#### „INVEST-PARK” Wałbrzych Special Economic Zone

In case the investor uses the state aid to cover the costs of the new investment, such costs include the following expenses:

- the purchase price of the land or of the right to its perpetual usufruct,
- the purchase price or the manufacturing cost of the fixed assets, under the condition they are included as a component of the taxpayer's assets (in case of an enterprise other than a small or medium one, such assets should be new),
- the cost of the expansion or modernization of the existing fixed assets,
- the purchase price of intangible fixed assets and legal values related to technology through purchasing patent titles, licenses, know-how or unpatented technical knowledge. In case of enterprises other than small and medium ones, such costs are considered as costs qualified for the state aid acquisition but in the amount not exceeding 50% of the value of costs qualified for the aid.

State aid

Bystrzyca Kłodzka District – Investment Offer

„INVEST-PARK” Walbrzych Special Economic Zone

Costs connected with acquisition of assets being a part of rental or lease, other than land, buildings or structures, are considered only in case when the rent or lease has the form of financial leasing and when it involves obligation to assets purchasing at the moment of the rent or lease period expiration. As for the rent or lease of land, buildings or structures, the rent or lease has to be valid for a period of at least 5 years from the anticipated date of the investment project ending, and in case of small and medium businesses – for a period of at least 3 years.

State aid

Bystrzyca Kłodzka District – Investment Offer

„INVEST-PARK” Walbrzych Special Economic Zone

In case the investor uses state aid to cover the costs of the new investment, they may acquire the aid up to the amount of 50% of investment costs which can be qualified for aid granting in Opole and Lubuskie provinces. In Lower Silesian and Wielkopolska provinces the amount reaches the level of 40%. It is important to note that an entrepreneur may not transfer, in any form, the ownership of the assets' components, with which investment expenses have been connected, for a period of 5 years (in case of small and medium businesses – 3 years) from the date they were registered in the fixed assets and intangible fixed assets and legal values records as defined in income tax regulations. The investor also has to run business activities for a period of 5 years (in case of small and medium businesses for a period not shorter than 3 years) from the moment the investment has been completed.

The minimum amount of the investment costs mentioned above equals to EUR 100.000. Another condition for granting the state aid for the new investment is the share of the entrepreneur's own assets understood as resources, which were not acquired within the aid that was granted, and which amount to at least 25% of the total investment costs. Investment is understood as investment in fixed assets and intangible fixed assets and legal values connected with establishment or expansion of an enterprise. State aid cannot be granted for reconstruction investments.

## State aid

### Bystrzyca Kłodzka District – Investment Offer

#### „INVEST-PARK” Walbrzych Special Economic Zone

State aid acquired from different sources is subject to summing up and cannot exceed 50%, in case of Opole and Lubuskie provinces, and 40%, in case of Lower Silesian and Wielkopolska provinces, of the incurred qualified investment costs or two-year labor costs of newly employed workers. In case of a small business state aid cannot exceed:

- 60% in the Lower Silesian and Wielkopolska provinces
- 70% in the Opole and Lubuskie provinces,

In case of a medium business state aid cannot exceed:

- 50% in the Lower Silesian and Wielkopolska provinces
- 60% in the Opole and Lubuskie provinces,

of the incurred investment costs or two-year labor costs of newly employed workers.

In case of aid granted to an enterprise for completion of a large investment project (costs qualified for being included in the state aid exceed EUR 50.000.000) the maximum amount of the aid is determined according to the equation:

$$I = R \times (\text{EUR } 50.000.000 + 0,5 \times B + 0,34 \times C)$$

I – the amount of aid for a large investment project

R - intensity of the aid for the location of the investment

B – the amount of investment costs qualified for the state aid exceeding EUR 50.000.000 but lower than EUR 100.000.000

C – the amount of investment costs qualified for the state aid exceeding EUR 100.000.000

Bystrzyca Kłodzka – Address data

Bystrzyca Kłodzka District – Investment Offer

You are welcome in Bystrzyca Kłodzka District

The Town and District Office of Bystrzyca Kłodzka

